

**THE LONDON RESORT
DEVELOPMENT CONSENT ORDER**

CONSULTATION REPORT APPENDICES

Reference: BC080001

5.1 Consultation Report Appendix 4.14 (part 3) (7 of 14)

**THE LONDON RESORT
DEVELOPMENT CONSENT ORDER**

CONSULTATION REPORT APPENDICES

Reference: BC080001

Appendix 4.14 (Part 3)

Copy of Section 48 notices, as placed

8. Certain advertisements in the area will also be controlled by the local planning authority

SCHEDULE

All the area that is bounded to the north by 2-10 Raikes Parade, Midland House (also known as Winstone House) and the Salvation Army Raikes Parade and car park, Synagogue Leamington Road, 3-63 Leamington Road, 1, 1a, 1b Whitegate Drive, No. 3 public house and car park, and 2A Bryan Road, 2 - 76 Bryan Road including 1 and 2 Whitley Avenue, to the east by 76 Bryan Road, 15 - 41 Beech Avenue and 35 Forest Gate, to the south by 1-35 Forest Gate, including 1 and 2 Olive Grove, 2a and 2-22 Forest Gate, 1, 1A, 1B and 1C Mere Road, 52 Whitegate Drive to Belle Vue Hotel, 53 - 59 Whitegate Drive, 90-194 Reads Avenue, and to the west by 2 Park Road, 12-58 Raikes Parade including the Raikes Parade elevation of 1 - 21 Priory Court, 129 and 136 Hornby Road, and 99 and 90 Reads Avenue, Blackpool and includes all properties that are within these bounds and all the properties identified herein as themselves forming part of the bounds

Schedule Note: The area therefore includes other properties on the roads named above and also properties on other roads not specifically named above, including those on Liverpool Road, Leicester Road, Longton Road, Lincoln Road, Leeds Road, Myrtle Avenue, Maple Avenue, Poplar Avenue and Elm Avenue, Blackpool

LONDON RESORT COMPANY HOLDINGS LTD

SECTION 48, PLANNING ACT 2008

REGULATION 4, INFRASTRUCTURE PLANNING (APPLICATIONS: PRESCRIBED FORMS AND PROCEDURE) REGULATIONS 2009

LONDON PARAMOUNT ENTERTAINMENT RESORT DEVELOPMENT CONSENT ORDER

NOTICE PUBLICISING A PROPOSED APPLICATION FOR A DEVELOPMENT CONSENT ORDER ("DCO")

Notice is hereby given that London Resort Company Holdings Ltd ("LRCH") of 17 Albemarle Street, London W1S 4HP intends to apply to the Secretary of State for Communities and Local Government under section 37 of the Planning Act 2008 for the above-mentioned DCO ("the proposed application").

The proposed application for the London Paramount Entertainment Resort project ("the Resort") which will be located on the Swanscombe Peninsula in the County of Kent, in the District of Dartford and the District of Gravesham, will be a nationally significant visitor attraction and leisure resort comprising a leisure core up to 50 ha in area, themed around the films and television programmes of Paramount Pictures, and currently including (but not limited to) the British Broadcasting Corporation (BBC) and Aardman Animations.

The Resort core will include—

- events spaces, rides, attractions, day-time and night-time shows and parades, entertainment venues, cinemas, theatres and nightclubs;
- ancillary food and beverage, retail, back of house/service and guest service facilities;
- hotel rooms as a part of a total provision of up to 5,000 hotel bedrooms across the Resort development as a whole;
- associated car parking as part of a maximum provision of 14,000 spaces; and
- hard and soft landscaping including amenity water features such as ponds and canals.

The proposed Resort development also includes the following principal elements—

- the creation of a visitor entrance square;
- the creation of a range of hotels, a water park and a transport interchange at the visitor entrance square;
- the construction of a new dual carriageway access road approximately 2.8 kilometres in length, between the A2(T)/B259 junction, and the Resort development area;
- the provision of a transport interchange at Ebbsfleet International Station, pedestrian facilities from London Road to the River Thames; pedestrian facilities and cycle track route along the Thames Path route; enhancements to the existing jetty on the River Thames to facilitate access by boat for the delivery of construction materials, and the creation of a floating pontoon for embarkment and disembarkment of visitors;
- the creation of a conference and exhibition event space;
- the creation of a creative business hub and office space for the creative industries;
- the creation of a green zone to include areas of environmental enhancement and wildlife habitat creation beside the River Thames;
- the provision of waste management, power generation and power distribution facilities;
- the enhancement of flood defence works; and
- the provision of ancillary emergency and security features.

The proposed Resort is "EIA development" for the purposes of the Infrastructure Planning (Environmental Impact Assessment) Regulations 2009. This means that the proposed works constitute development for which an Environmental Impact Assessment would be required. LRCH's proposed application for a DCO will, therefore, be accompanied by an Environmental Statement, containing the information about the environmental effects of the proposed development.

The documents, plans and maps showing the nature and location of the proposed application, including information so far compiled about environmental impacts (preliminary environmental information), may be inspected free of charge from **Monday 27 April 2015 to Friday 5 June 2015** at the locations and times set out below:

Venue

DARTFORD

Dartford Council Offices
Civic Centre, Home Gardens,
Dartford, Kent DA1 1DR
Swanscombe and Greenhithe Town Council
Council Offices, The Grove,
Kent DA10 0GA
Community Café
Old Fire Station Café,
Church Road, Swanscombe,
Kent DA10 0HF

Opening hours

Monday, Tuesday, Wednesday & Thursday: 8:45am-5:15pm
Friday: 8:45am-4:45pm
Saturday & Sunday: Closed
Monday, Tuesday, Thursday & Friday:
9:30am-1pm & 1:45pm-4pm
Wednesday, Saturday & Sunday: Closed
Monday, Tuesday, Wednesday, Thursday & Friday: 10am-2pm
Saturday & Sunday: Closed

A plan showing the boundary of the designated Raikes Hall Conservation Area is available to view at Municipal Buildings, Corporation Street, Blackpool, FY1 1NF (Monday to Friday 09.00 - 17.00) or via www.blackpool.gov.uk/conservationareas

Further information regarding conservation areas may be obtained from: Blackpool Council, Built Heritage and Conservation Team, 81 Central, 77-71 Church Street, Blackpool, FY1 1HU (telephone 01253 476332) or via email to bultheritage@blackpool.gov.uk

Dated 15 April 2015

Carmel White

Chief Corporate Solicitor

PO Box 11

Town Hall

Blackpool FY1 1NB

(2318391)

Venue

Greenhithe Library
London Road, Greenhithe,
Kent DA9 9EJ
Swan Valley Library
Swanscombe Library, Discovery Centre,
Ebbsfleet Academy,
Southfleet Road, Swanscombe,
Kent, DA10 0BZ
Longfield Library
49 Main Road, Longfield,
Kent DA3 7QT

Dartford Library
Central Park, Market Street, Dartford,
Kent DA1 1EU
Temple Hill Library
Temple Hill Square, Dartford,
Kent DA1 5HY
Ashen Drive Library
Ashen Drive, Dartford,
Kent DA1 3LY

Fleetdown Library
Swaledale Road, Dartford,
Kent DA2 6JZ

Sutton-at-Hone Library
Main Road, Sutton-At-Hone,
Dartford,
Kent DA4 9HQ
Summerhouse Drive Library
80 Summerhouse, Bexley,
Kent DA6 2EE

GRAVESHAM

Gravesham Borough Council
Civic Centre and Gateway,
Windmill Street, Gravesend,
Kent DA12 1AU
Coldharbour Library
Coldharbour Road, Northfleet,
Gravesend, Kent DA11 8AE

Gravesend Library
Windmill Street, Gravesend,
Kent DA12 1BE
Dashwood Library
Dashwood Road, Northfleet,
Gravesend,
Kent DA11 7LY
Higham Library
Villa Road, Higham, Rochester,
Kent ME3 7BS

Hive House Library
Hive House, 10-11 The Hive,
Northfleet, Gravesend,
Kent DA11 9DE
King's Farm Library
Sun Lane, Gravesend,
Kent DA12 5HR
Marling Cross Library
266 Mackenzie Way, Gravesend,
Kent DA12 5TY

Meopham Library
Wrotham Road, Meopham,
Gravesend,
Kent DA13 0AH
Riverview Park Library
The Alma, Leander Drive,
Gravesend,
Kent DA12 4NG
Vigo Library
Village Hall, The Bay, Vigo,

Opening hours

Tuesday & Thursday: 1pm–5:30pm
Saturday 9:30am–12:30pm
Monday, Wednesday, Friday & Sunday: Closed
Monday, Tuesday & Saturday: 10am–2pm
Wednesday & Friday: 1pm–5pm
Thursday & Sunday: Closed

Tuesday & Friday: 1pm–6pm
Wednesday & Thursday: 9am–1pm
Saturday 10am–2pm
Monday & Sunday: Closed
Monday, Tuesday, Wednesday, Thursday & Friday: 8:30am–6pm
Saturday: 9am–5pm
Sunday: Closed
Monday, Tuesday, Thursday & Friday: 9am–6pm
Saturday: 10am–2pm
Wednesday & Sunday: Closed
Monday & Thursday: 2pm–6pm
Tuesday & Friday: 9am–1pm
Saturday: 10am–12pm
Wednesday & Sunday: Closed
Tuesday, Thursday & Friday: 9:30am–5:30pm
Wednesday: 1:30pm–5:30pm
Saturday: 10am–12pm
Monday & Sunday: Closed
Monday & Friday: 10am–6pm
Tuesday & Saturday: 10am–2pm
Wednesday, Thursday & Sunday: Closed

Tuesday & Thursday: 9am–6pm
Friday: 2pm–6pm
Saturday: 10am–2pm
Monday, Wednesday & Sunday: Closed

Monday, Tuesday, Wednesday, Thursday & Friday: 9am–5pm
Saturday & Sunday: Closed

Monday, Wednesday, Thursday & Friday: 9am–6pm
Tuesday: 9am–8pm
Saturday: 9am–5pm
Sunday: Closed
Monday, Tuesday, Wednesday, Thursday & Friday: 9am–6pm
Saturday: 9am–5pm
Sunday: Closed
Monday & Friday: 9:30am–1pm & 2pm–5pm
Tuesday & Saturday: 2pm–5pm
Wednesday, Thursday & Sunday: Closed

Monday, Wednesday & Friday: 9am–1pm
Tuesday & Thursday: 2pm–5:30pm
Saturday: 10am–2pm
Sunday: Closed
Monday & Tuesday: 9am–12:30pm
Thursday & Friday: 2pm–5pm
Saturday: 10am–2pm
Wednesday & Sunday: Closed
Monday, Tuesday, Wednesday & Friday: 9am–5pm
Saturday: 10am–2pm
Thursday & Sunday: Closed
Tuesday: 9:30am–1pm & 2pm–5pm
Thursday: 9:30am–1pm
Friday: 2pm–5pm
Saturday: 2pm–4pm
Monday, Wednesday & Sunday: Closed
Monday, Tuesday, Thursday & Friday: 9am–6pm
Saturday: 9am–1pm
Wednesday & Sunday: Closed

Monday, Tuesday, Wednesday & Friday: 9am–6pm
Saturday: 10am–2pm
Thursday & Sunday: Closed

Tuesday: 11am–1pm & 2pm–5pm
Saturday: 9:30am–2:30pm

Venue

Gravesend,
Kent DA13 0TD
KENT (Maidstone)
Kent County Council
County Hall, Maidstone,
Kent ME14 1XQ
Maidstone Library
Kent History and Library Centre,
James Whatman Way, Maidstone,
Kent ME14 1LQ
SEVENOAKS
Sevenoaks Library
Buckhurst Lane, Sevenoaks,
Kent TN13 1LQ

TONBRIDGE & MALLING

Tonbridge Library
1 Avebury Avenue, Tonbridge,
Kent TN9 1TG

THURROCK

Grays Central Library
Thameside Complex,
Orsett Road, Grays,
Essex RM17 5DX
LONDON BOROUGH OF BEXLEY
Central Library
Townley Road, Bexleyheath
DA6 7HJ

LONDON BOROUGH OF BROMLEY

Central Library
High Street, Bromley BR1 1EX

MEDWAY

Medway Council
Gun Wharf, Dock Road,
Chatham ME4 4TR

Project information may continue to be updated until Friday 8 May 2015 and you are therefore advised to check the website www.londonparamount.info and deposit locations for such updates.

Copies of the documents, plans and maps will be available on LRCH's website at www.londonparamount.info from **Monday 27 April 2015**. They can also be provided on request by emailing consultation@londonparamount.info, by calling the **Freephone number 0800 008 6765** Mondays to Fridays between 9am and 5.30pm or by writing to **FREEPOST Ref: RTRB-LUUJ-AGBY, London Paramount, c/o PPS Group, Sky Light City Tower, 50 Basinghall Street, London, EC2V 5DE**. A reasonable copying charge will apply (up to a maximum of £300 for the full suite of documents). The documents can also be obtained on a DVD, free of charge, by contacting LRCH as detailed here. LRCH is consulting on the proposed application. Any representations on the proposals should be made in writing to **"FREEPOST Ref: RTRB-LUUJ-AGBY, London Paramount, c/o PPS Group, Sky Light City Tower, 50 Basinghall Street, London, EC2V 5DE"**, sent by email to consultation@londonparamount.info, or by completing the feedback form which can be found on the LRCH's website at www.londonparamount.info. The deadline for receiving responses is **Friday 5 June 2015**. Please quote "London Paramount Entertainment Resort Order" in any correspondence.

LRCH requests that responses state the grounds of representation, indicate who is making it, and provide an address to which any correspondence relating to the representation may be sent.

We may be required to make copies of representations available to the Secretary of State. We will, however, request that personal details are not placed on the public record. Personal details will be held securely in accordance with the Data Protection Act 1998 and will be used solely in connection with the consultation process and the development of the Project and, except as noted above, will not be disclosed to any third parties.

Bircham Dyson Bell LLP
Solicitors and Parliamentary Agents acting for LRCH
50 Broadway, London SW1H 0BL
12 April 2015

(2318385)

Property & land

PROPERTY DISCLAIMERS**NOTICE OF DISCLAIMER UNDER SECTION 1013 OF THE COMPANIES ACT 2006**

IN PURSUANCE of the powers granted by Section 1013 of the Companies Act 2006 THE SOLICITOR FOR THE AFFAIRS OF THE DUCHY OF LANCASTER as nominee for HER MAJESTY IN RIGHT OF HER MAJESTY'S DUCHY OF LANCASTER in whom the property and rights of GROUPDAVIES LIMITED (Company Number 07535739) (**the Company**) vested pursuant to Section 1012 of the Companies

Opening hours

Monday, Wednesday, Thursday, Friday & Sunday: Closed

Monday, Tuesday, Wednesday, Thursday & Friday: 9am–5pm
Saturday & Sunday: Closed

Monday, Tuesday, Wednesday & Friday: 9am–6pm
Thursday: 9am–8pm
Saturday: 9am–5pm
Sunday: Closed

Monday, Tuesday, Wednesday & Friday: 9am–6pm
Thursday: 9am–8pm
Saturday: 9am–5pm
Sunday: Closed

Monday, Tuesday, Wednesday & Friday: 9am–6pm
Thursday: 9am–8pm
Saturday: 9am–5pm
Sunday: Closed

Monday, Tuesday, Wednesday & Thursday: 10am–7pm
Friday & Saturday: 10am–5pm
Sunday: Closed

Monday, Tuesday & Wednesday: 10am–5.30pm
Thursday: 10am–7pm
Friday & Sunday: 10am–1pm
Saturday: 1pm–5pm

Monday, Tuesday, Wednesday & Friday: 9.30am–6pm
Thursday: 9.30am–8pm
Saturday: 9.30am–5pm
Sunday: Closed

Monday, Tuesday, Wednesday, Thursday & Friday: 10am–4pm
Saturday & Sunday: Closed

Act 2006 when the Company was dissolved on 2 October 2012 HEREBY DISCLAIMS the title of Her Majesty in Right of Her Majesty's Duchy of Lancaster (if any) in the premises demised by a lease dated 4 August 2011 and made between Bewise Property Services Limited (1) and Groupdavies Limited (2) (the Company) of land and buildings back (south west) of 12 Curzon Street Lytham St Annes Lancashire FY8 3SE as the same is delineated on a plan held by the Solicitor for the Affairs of the Duchy of Lancaster (which is available for inspection at the office of Farrer & Co, 66 Lincoln's Inn Fields, London WC2A 3LH) the vesting of the premises having come to his notice on 12 September 2014.

Solicitor for the Affairs of the Duchy of Lancaster
8 April 2015

(2318904)



THE GAZETTE

LONDON GAZETTE

**CONTAINING ALL NOTICES PUBLISHED ONLINE ON
15 APRIL 2015**

PRINTED ON 16 APRIL 2015 | NUMBER 61200
PUBLISHED BY AUTHORITY | ESTABLISHED 1665
WWW.THEGAZETTE.CO.UK

Contents

State/6978*

Royal family/

Parliament & Assemblies/

Church/

Companies/6978*

People/7051*

Money/

Environment & infrastructure/7086*

Health & medicine/

Other Notices/7096*

Terms & Conditions/7106*

* Containing all notices published online on 15 April 2015

LONDON RESORT COMPANY HOLDINGS LTD
SECTION 48, PLANNING ACT 2008
REGULATION 4, INFRASTRUCTURE PLANNING
(APPLICATIONS: PRESCRIBED FORMS AND PROCEDURE)
REGULATIONS 2009

LONDON PARAMOUNT ENTERTAINMENT RESORT
DEVELOPMENT CONSENT ORDER
NOTICE PUBLICISING A PROPOSED APPLICATION FOR A
DEVELOPMENT CONSENT ORDER ("DCO")

Notice is hereby given that London Resort Company Holdings Ltd ("LRCH") of 17 Albemarle Street, London W1S 4HP intends to apply to the Secretary of State for Communities and Local Government under section 37 of the Planning Act 2008 for the above mentioned DCO ("the proposed application").

The proposed application for the London Paramount Entertainment Resort project ("the Resort") which will be located on the Swanscombe Peninsula in the County of Kent, in the District of Dartford and the District of Gravesham, will be a nationally significant visitor attraction and leisure resort comprising a leisure core up to 50 ha in area, themed around the films and television programmes of Paramount Pictures, and currently including (but not limited to) the British Broadcasting Corporation (BBC) and Aardman Animations.

The Resort core will include—

- events spaces, rides, attractions, day-time and night-time shows and parades, entertainment venues, cinemas, theatres and nightclubs;
 - ancillary food and beverage, retail, back of house/service and guest service facilities;
 - hotel rooms as a part of a total provision of up to 5,000 hotel bedrooms across the Resort development as a whole;
 - associated car parking as part of a maximum provision of 14,000 spaces; and
 - hard and soft landscaping including amenity water features such as ponds and canals.
- The proposed Resort development also includes the following principal elements—
- the creation of a visitor entrance square;
 - the creation of a range of hotels, a water park and a transport interchange at the visitor entrance square;
 - the construction of a new dual carriageway access road approximately 2.8 kilometres in length, between the A2(T)/B259 junction, and the Resort development area;
 - the provision of a transport interchange at Ebbsfleet International Station, pedestrian facilities from London Road to the River Thames; pedestrian facilities and cycle track route along the Thames Path route; enhancements to the existing jetty on the River Thames to facilitate access by boat for the delivery of construction materials, and the creation of a floating pontoon for embarkment and disembarkment of visitors;
 - the creation of a conference and exhibition event space;
 - the creation of a creative business hub and office space for the creative industries;
 - the creation of a green zone to include areas of environmental enhancement and wildlife habitat creation beside the River Thames;
 - the provision of waste management, power generation and power distribution facilities;
 - the enhancement of flood defence works; and
 - the provision of ancillary emergency and security features.

The proposed Resort is "EIA development" for the purposes of the Infrastructure Planning (Environmental Impact Assessment) Regulations 2009. This means that the proposed works constitute development for which an Environmental Impact Assessment would be required. LRCH's proposed application for a DCO will, therefore, be accompanied by an Environmental Statement, containing the information about the environmental effects of the proposed development.

The documents, plans and maps showing the nature and location of the proposed application, including information so far compiled about environmental impacts (preliminary environmental information), may be inspected free of charge from **Monday 27 April 2015 to Friday 5 June 2015** at the locations and times set out below:

Venue	Opening hours
DARTFORD	
Dartford Council Offices Civic Centre, Home Gardens, Dartford, Kent DA1 1DR	Monday, Tuesday, Wednesday & Thursday: 8:45am–5:15pm Friday: 8:45am–4:45pm Saturday & Sunday: Closed
Swanscombe and Greenhithe Town Council Council Offices, The Grove, Kent DA10 0GA	Monday, Tuesday, Thursday & Friday: 9:30am–1pm & 1:45pm–4pm Wednesday, Saturday & Sunday: Closed
Community Café Old Fire Station Café, Church Road, Swanscombe, Kent DA10 0HF	Monday, Tuesday, Wednesday, Thursday & Friday: 10am–2pm Saturday & Sunday: Closed
Greenhithe Library London Road, Greenhithe, Kent DA9 9EJ	Tuesday & Thursday: 1pm–5:30pm Saturday 9:30am–12:30pm Monday, Wednesday, Friday & Sunday: Closed
Swan Valley Library Swanscombe Library Discovery Centre, Ebbsfleet Academy, Southfleet Road, Swanscombe, Kent, DA10 0BZ	Monday, Tuesday & Saturday: 10am–2pm Wednesday & Friday: 1pm–5pm Thursday & Sunday: Closed

Venue	Opening hours
Longfield Library 49 Main Road, Longfield, Kent DA3 7QT	Tuesday & Friday: 1pm–6pm Wednesday & Thursday: 9am–1pm Saturday 10am–2pm Monday & Sunday: Closed
Dartford Library Central Park, Market Street, Dartford, Kent DA1 1EU	Monday, Tuesday, Wednesday, Thursday & Friday: 8:30am–6pm Saturday: 9am–5pm Sunday: Closed
Temple Hill Library Temple Hill Square, Dartford, Kent DA1 5HY	Monday, Tuesday, Thursday & Friday: 9am–6pm Saturday: 10am–2pm Wednesday & Sunday: Closed
Ashen Drive Library Ashen Drive, Dartford, Kent DA1 3LY	Monday & Thursday: 2pm–6pm Tuesday & Friday: 9am–1pm Saturday: 10am–12pm Wednesday & Sunday: Closed
Fleetdown Library Swaledale Road, Dartford, Kent DA2 6JZ	Tuesday, Thursday & Friday: 9:30am–5:30pm Wednesday: 1:30pm–5:30pm Saturday: 10am–12pm Monday & Sunday: Closed
Sutton-at-Hone Library Main Road, Sutton-At-Hone, Dartford, Kent DA4 9HQ	Monday & Friday: 10am–6pm Tuesday & Saturday: 10am–2pm Wednesday, Thursday & Sunday: Closed
Summerhouse Drive Library 80 Summerhouse, Bexley, Kent DA6 2EE	Tuesday & Thursday: 9am–6pm Friday: 2pm–6pm Saturday: 10am–2pm Monday, Wednesday & Sunday: Closed
GRAVESHAM	
Gravesham Borough Council Civic Centre and Gateway, Windmill Street, Gravesend, Kent DA12 1AU	Monday, Tuesday, Wednesday, Thursday & Friday: 9am–5pm Saturday & Sunday: Closed
Coldharbour Library Coldharbour Road, Northfleet, Gravesend, Kent DA11 8AE	Monday, Wednesday, Thursday & Friday: 9am–6pm Tuesday: 9am–8pm Saturday: 9am–5pm Sunday: Closed
Gravesend Library Windmill Street, Gravesend, Kent DA12 1BE	Monday, Tuesday, Wednesday, Thursday & Friday: 9am–6pm Saturday: 9am–5pm Sunday: Closed
Dashwood Library Dashwood Road, Northfleet, Gravesend, Kent DA11 7LY	Monday & Friday: 9:30am–1pm & 2pm–5pm Tuesday & Saturday: 2pm–5pm Wednesday, Thursday & Sunday: Closed
Higham Library Villa Road, Higham, Rochester, Kent ME3 7BS	Monday, Wednesday & Friday: 9am–1pm Tuesday & Thursday: 2pm–5:30pm Saturday: 10am–2pm Sunday: Closed
Hive House Library Hive House, 10-11 The Hive, Northfleet, Gravesend, Kent DA11 9DE	Monday & Tuesday: 9am–12:30pm Thursday & Friday: 2pm–5pm Saturday: 10am–2pm Wednesday & Sunday: Closed
King's Farm Library Sun Lane, Gravesend, Kent DA12 5HR	Monday, Tuesday, Wednesday & Friday: 9am–5pm Saturday: 10am–2pm Thursday & Sunday: Closed
Marling Cross Library 266 Mackenzie Way, Gravesend, Kent DA12 5TY	Tuesday: 9:30am–1pm & 2pm–5pm Thursday: 9:30am–1pm Friday: 2pm–5pm Saturday: 2pm–4pm Monday, Wednesday & Sunday: Closed
Meopham Library Wrotham Road, Meopham, Gravesend, Kent DA13 0AH	Monday, Tuesday, Thursday & Friday: 9am–6pm Saturday: 9am–1pm Wednesday & Sunday: Closed
Riverview Park Library The Alma, Leander Drive, Gravesend, Kent DA12 4NG	Monday, Tuesday, Wednesday & Friday: 9am–6pm Saturday: 10am–2pm Thursday & Sunday: Closed

Venue	Opening hours
Vigo Library Village Hall, The Bay, Vigo, Gravesend, Kent DA13 0TD	Tuesday: 11am–1pm & 2pm–5pm Saturday: 9:30am–2:30pm Monday, Wednesday, Thursday, Friday & Sunday: Closed
KENT (Maidstone)	
Kent County Council County Hall, Maidstone, Kent ME14 1XQ	Monday, Tuesday, Wednesday, Thursday & Friday: 9am–5pm Saturday & Sunday: Closed
Maidstone Library Kent History and Library Centre, James Whatman Way, Maidstone, Kent ME14 1LQ	Monday, Tuesday, Wednesday & Friday: 9am–6pm Thursday: 9am–8pm Saturday: 9am–5pm Sunday: Closed
SEVENOAKS	
Sevenoaks Library Buckhurst Lane, Sevenoaks, Kent TN13 1LQ	Monday, Tuesday, Wednesday & Friday: 9am–6pm Thursday: 9am–8pm Saturday: 9am–5pm Sunday: Closed
TONBRIDGE & MALLING	
Tonbridge Library 1 Avebury Avenue, Tonbridge, Kent TN9 1TG	Monday, Tuesday, Wednesday & Friday: 9am–6pm Thursday: 9am–8pm Saturday: 9am–5pm Sunday: Closed
THURROCK	
Grays Central Library Thameside Complex, Orsett Road, Grays, Essex RM17 5DX	Monday, Tuesday, Wednesday & Thursday: 10am–7pm Friday & Saturday: 10am–5pm Sunday: Closed
LONDON BOROUGH OF BEXLEY	
Central Library Townley Road, Bexleyheath DA6 7HJ	Monday, Tuesday & Wednesday: 10am–5:30pm Thursday: 10am–7pm Friday & Saturday: 10am–1pm Sunday: 1pm–5pm
LONDON BOROUGH OF BROMLEY	
Central Library High Street, Bromley BR1 1EX	Monday, Tuesday, Wednesday & Friday: 9.30am–6pm Thursday: 9.30am–8pm Saturday: 9.30am–5pm Sunday: Closed
MEDWAY	
Medway Council Gun Wharf, Dock Road, Chatham ME4 4TR	Monday, Tuesday, Wednesday, Thursday & Friday: 10am–4pm Saturday & Sunday: Closed

Project information may continue to be updated until Friday 8 May 2015 and you are therefore advised to check the website www.londonparamount.info and deposit locations for such updates.

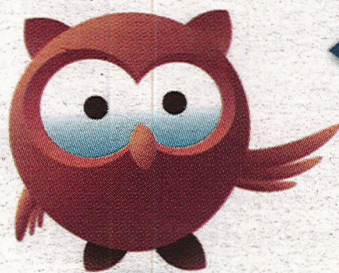
Copies of the documents, plans and maps will be available on LRCH's website at www.londonparamount.info from Monday 27 April 2015. They can also be provided on request by emailing consultation@londonparamount.info, by calling the Freephone number 0800 008 6765 Mondays to Fridays between 9am and 5.30pm or by writing to FREEPOST Ref: RTRB-LUUI-AGBY, London Paramount, c/o PPS Group, Sky Light City Tower, 50 Basinghall Street, London, EC2V 5DE. A reasonable copying charge will apply (up to a maximum of £300 for the full suite of documents). The documents can also be obtained on a DVD, free of charge, by contacting LRCH as detailed here.

LRCH is consulting on the proposed application. Any representations on the proposals should be made in writing to "FREEPOST Ref: RTRB-LUUI-AGBY, London Paramount, c/o PPS Group, Sky Light City Tower, 50 Basinghall Street, London, EC2V 5DE", sent by email to consultation@londonparamount.info, or by completing the feedback form which can be found on the LRCH's website at www.londonparamount.info. The deadline for receiving responses is Friday 5 June 2015. Please quote "London Paramount Entertainment Resort Order" in any correspondence.

LRCH requests that responses state the grounds of representation, indicate who is making it, and provide an address to which any correspondence relating to the representation may be sent.

We may be required to make copies of representations available to the Secretary of State. We will, however, request that personal details are not placed on the public record. Personal details will be held securely in accordance with the Data Protection Act 1998 and will be used solely in connection with the consultation process and the development of the Project and, except as noted above, will not be disclosed to any third parties.

Bircham Dyson Bell LLP
Solicitors and Parliamentary Agents acting for LRCH
50 Broadway, London SW1H 0BL
12 April 2015



Find whatever business you're looking for.

It's the business directory for you!

newsshopper.co.uk/click2find

Want to add your business? It's free! Enhanced listings are available too.

News Shopper



Supporting local businesses

News Shopper

PROUDLY

SERVING THE COMMUNITY

FOR 50 YEARS

1965 - 2015

60p where sold

Wednesday, April 15, 2015

NEWS



5
A head start for Shopper beer

PUBSPY



14
Vintage charms of Somerset Arms

NEWS IN PICTURES



23
How youngsters gave rugby a try



TODAY'S PAPER STARTS ON THE NEXT PAGE



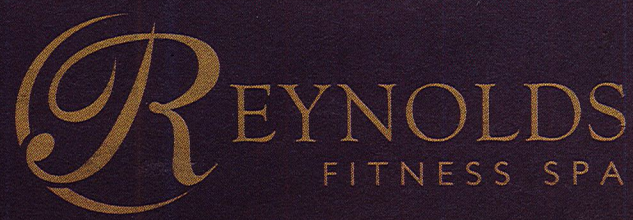
WARNING
EXERCISE
HAS BEEN KNOWN
TO CAUSE **HEALTH**
& **HAPPINESS**

Follow us on Social Media @ReynoldsFitnessSpa



The greatest wealth is health.

The Chapel, Chapel Walk, Bexley, Kent DA5 2DX
JOIN TODAY 01322 522209
www.reynoldsgroup.co.uk



CAUGHT ON THE HOP!

KEEPING A TAB ON OUR ANNIVERSARY BEER PAGE 5



Wednesday, April 15, 2015

● Jail time for man who stabbed young mother, put her in car boot and set it alight

'HORRIFIC ATTACK'

DEPUTY NEWS EDITOR
PATRICK GRAFTON-GREEN

patrickgg@london.newsquest.co.uk

A 27-year-old man has been sentenced to life in prison for stabbing a young mother, putting her in the boot of a car and setting it on fire.

Joshua Caird, of Almond Road, Stone, pleaded guilty to the murder of mum-of-four Donna Eastwood, also of Almond Road, at Maidstone Crown Court on Friday, April 10.

The 26-year-old's body was discovered in a burnt-out car in Rowhill Road, Wilmington, on October 18 last year.

After the sentencing, Miss Eastwood's sister, Lisa Sheppard, said: "Donna was an amazing person who would light up a room whenever she walked into it. I miss her so much it hurts."

"I would like to thank our family and friends for supporting us through this terrible time."

"Life no doubt will still be hard but to know that Donna's killer is locked up is of some comfort."

On the night of her death - Friday, October 17 - Miss Eastwood, who was Caird's neighbour, was seen talking to him at a surprise birthday party for his mother.

Just after 1am, Miss Eastwood left the party, which had been held next door at Caird's sister's house.

About an hour later, Caird, who was drunk and had fallen asleep at the party, walked home with his parents, a few doors away.

He was helped into his bedroom by his father, before slumping on the bed.

A few hours later, Caird went to Miss Eastwood's house and stabbed her with a kitchen knife.

He wrapped her in tarpaulin he had got from his parents' barbecue and put her into the boot of his sister's Nissan Qashqai, which he had stolen.

Caird then drove to his



Clockwise, from top left: Joshua Caird, Donna Eastwood, the burnt-out car and the knife

brother's house in Edgefield Close, Dartford.

He asked his brother for help disposing of Miss Eastwood and said: "She's in the car. I think I've killed her."

Caird's brother ran to the car and, seeing the body-shaped green tarpaulin in the boot, tried to pull Miss Eastwood out.

Caird punched his brother several times, knocked him to the ground, and drove away.

At about 5.30am, police received three separate calls to report Caird's actions, within the space of a few minutes.

At about 7am, Kent Fire and Rescue Service was called to

Rowhill Road, Wilmington, where a car had been found alight.

Miss Eastwood's body was found in the boot, the murder weapon under her body, and a 30-hour manhunt took place to find Caird.

The next day, he was discovered in the attic of his empty house after he had broken back in.

Caird was interviewed by police for two-and-a-half hours, but sat in silence throughout.

Detectives worked to piece together evidence gathered at the scene, Caird's house and at the victim's home, and he was charged with murder.

Detective Inspector Ivan Beasley, of the Kent and Essex Serious Crime Directorate, said: "This was a senseless and cold-blooded attack on an innocent mother in the middle of the night."

"Caird had spent the evening socialising at a party with his victim, before stabbing her and leaving her to die in a burning car."

"He committed a vicious attack on a mother-of-four before cowardly hiding from the police."

"He killed an innocent woman in a horrific, drunken attack."

● For more on this story visit newsshopper.co.uk.

"Caird had spent the evening socialising at a party with his victim, before stabbing her and leaving her to die in a burning car."

Gemini Coach Tours
Day trips by Coach



Call for Brochure
See and discover more with Gemini Coach Tours
Tel: 01322 383 913
Email: info@geminitours.co.uk | www.geminitours.co.uk

Green Spice
Award-winning Restaurant
Traditional Indian Cuisine
Unique in taste & aroma



ABBA & 70s Tribute

Charity Night for the mayor of Dartford charities

Thursday 21st May
£25pp
Fabulous dinner with selection of starters, main courses + side dishes + Show (drinks & desserts not included)
£10.00 per head deposit.

Green Street Green Road, Darenth, Dartford, Kent DA2 8DP
Tel + Fax: 01474 708885 Tel: 01474 708428
www.greenspice.net

CARROLL CARPETS & FLOORING

YOUR ONE-STOP FLOORING SHOP

- WOODEN FLOORING
- VINYL FLOORING
- FREE ESTIMATES
- LAMINATE FLOORING
- ALL TYPES OF CARPETS
- FREE FITTING
- LUXURY VINYL TILES

SPEAK TO AN EXPERT, NOT JUST A SALESMAN!!

FREEPHONE 0800 317452 11-13 STATION RD, SWANLEY BR8 8ES
www.carrollcarpets.com

Tiffin INDIAN TAKEAWAY

01322 270 277
TIFFIN-DARTFORD.CO.UK



FREE DELIVERY, COLLECTIONS & PRE-ORDERS AVAILABLE
8 MARKET ST, DARTFORD, DA1 1ET

the jafflong
traditional & authentic indian cuisine

TRIP ADVISOR WINNER 2014:
Find out why we are the highest rated curry house in town.

Banquet Nights

Every Sunday Wednesday & Thursday
Choose any starter, a main dish and a side dish to go with your choice of any naan bread or rice from our menu
For only £9.95 T&Cs apply

58 Spital Street, Dartford, DA1 2DT
www.facebook.com/jafflong / [Twitter: @thejafflong](https://twitter.com/thejafflong)
01322 293 858 / 01322 277 457
Email: thejafflong@live.co.uk

LONDON RESORT COMPANY HOLDINGS LTD**SECTION 48, PLANNING ACT 2008****REGULATION 4, INFRASTRUCTURE PLANNING
(APPLICATIONS: PRESCRIBED FORMS AND PROCEDURE)
REGULATIONS 2009****LONDON PARAMOUNT ENTERTAINMENT RESORT
DEVELOPMENT CONSENT ORDER****NOTICE PUBLICISING A PROPOSED APPLICATION FOR A
DEVELOPMENT CONSENT ORDER ("DCO")**

Notice is hereby given that London Resort Company Holdings Ltd ("LRCH") of 17 Albemarle Street, London W1S 4HP intends to apply to the Secretary of State for Communities and Local Government under section 37 of the Planning Act 2008 for the above mentioned DCO ("the proposed application").

The proposed application for the London Paramount Entertainment Resort project ("the Resort") which will be located on the Swanscombe Peninsula in the County of Kent, in the District of Dartford and the District of Gravesham, will be a nationally significant visitor attraction and leisure resort comprising a leisure core up to 50 ha in area, themed around the films and television programmes of Paramount Pictures, and currently including (but not limited to) the British Broadcasting Corporation (BBC) and Aardman Animations.

The Resort core will include—

- events spaces, rides, attractions, day-time and night-time shows and parades, entertainment venues, cinemas, theatres and nightclubs;
- ancillary food and beverage, retail, back of house/service and guest service facilities;
- hotel rooms as a part of a total provision of up to 5,000 hotel bedrooms across the Resort development as a whole;
- associated car parking as part of a maximum provision of 14,000 spaces; and
- hard and soft landscaping including amenity water features such as ponds and canals.

The proposed Resort development also includes the following principal elements—

- the creation of a visitor entrance square;
- the creation of a range of hotels, a water park and a transport interchange at the visitor entrance square;
- the construction of a new dual carriageway access road approximately 2.8 kilometres in length, between the A2(T)/B259 junction, and the Resort development area;
- the provision of a transport interchange at Ebbsfleet International Station, pedestrian facilities from London Road to the River Thames; pedestrian facilities and cycle track route along the Thames Path route; enhancements to the existing jetty on the River Thames to facilitate access by boat for the delivery of construction materials, and the creation of a floating pontoon for embarkment and disembarkment of visitors;
- the creation of a conference and exhibition event space;
- the creation of a creative business hub and office space for the creative industries;
- the creation of a green zone to include areas of environmental enhancement and wildlife habitat creation beside the River Thames;
- the provision of waste management, power generation and power distribution facilities;
- the enhancement of flood defence works; and
- the provision of ancillary emergency and security features.

The proposed Resort is "EIA development" for the purposes of the Infrastructure Planning (Environmental Impact Assessment) Regulations 2009. This means that the proposed works constitute development for which an Environmental Impact Assessment would be required. LRCH's proposed application for a DCO will, therefore, be accompanied by an Environmental Statement, containing the information about the environmental effects of the proposed development.

The documents, plans and maps showing the nature and location of the proposed application, including information so far compiled about environmental impacts (preliminary environmental information), may be inspected free of charge from **Monday 27 April 2015 to Friday 5 June 2015** at the locations and times set out below:

Venue	Opening hours
DARTFORD	
Dartford Council Offices Civic Centre, Home Gardens, Dartford, Kent DA1 1DR	Monday, Tuesday, Wednesday & Thursday: 8:45am–5:15pm Friday: 8:45am–4:45pm Saturday & Sunday: Closed
Swanscombe and Greenhithe Town Council Council Offices, The Grove, Kent DA10 0GA	Monday, Tuesday, Thursday & Friday: 9:30am–1pm & 1:45pm–4pm Wednesday, Saturday & Sunday: Closed
Community Café Old Fire Station Café, Church Road, Swanscombe, Kent DA10 0HF	Monday, Tuesday, Wednesday, Thursday & Friday: 10am–2pm Saturday & Sunday: Closed
Greenhithe Library London Road, Greenhithe, Kent DA9 9EJ	Tuesday & Thursday: 1pm–5:30pm Saturday 9:30am–12:30pm Monday, Wednesday, Friday & Sunday: Closed
Swan Valley Library Swanscombe Library Discovery Centre, Ebbsfleet Academy, Southfleet Road, Swanscombe, Kent, DA10 0BZ	Monday, Tuesday & Saturday: 10am–2pm Wednesday & Friday: 1pm–5pm Thursday & Sunday: Closed

Venue	Opening hours
Longfield Library 49 Main Road, Longfield, Kent DA3 7QT	Tuesday & Friday: 1pm–6pm Wednesday & Thursday: 9am–1pm Saturday 10am–2pm Monday & Sunday: Closed
Dartford Library Central Park, Market Street, Dartford, Kent DA1 1EU	Monday, Tuesday, Wednesday, Thursday & Friday: 8:30am–6pm Saturday: 9am–5pm Sunday: Closed
Temple Hill Library Temple Hill Square, Dartford, Kent DA1 5HY	Monday, Tuesday, Thursday & Friday: 9am–6pm Saturday: 10am–2pm Wednesday & Sunday: Closed
Ashen Drive Library Ashen Drive, Dartford, Kent DA1 3LY	Monday & Thursday: 2pm–6pm Tuesday & Friday: 9am–1pm Saturday: 10am–12pm Wednesday & Sunday: Closed
Fleetdown Library Swaledale Road, Dartford, Kent DA2 6JZ	Tuesday, Thursday & Friday: 9:30am–5:30pm Wednesday: 1:30pm–5:30pm Saturday: 10am–12pm Monday & Sunday: Closed
Sutton-at-Hone Library Main Road, Sutton-At-Hone, Dartford, Kent DA4 9HQ	Monday & Friday: 10am–6pm Tuesday & Saturday: 10am–2pm Wednesday, Thursday & Sunday: Closed
Summerhouse Drive Library 80 Summerhouse, Bexley, Kent DA6 2EE	Tuesday & Thursday: 9am–6pm Friday: 2pm–6pm Saturday: 10am–2pm Monday, Wednesday & Sunday: Closed
GRAVESHAM	
Gravesham Borough Council Civic Centre and Gateway, Windmill Street, Gravesend, Kent DA12 1AU	Monday, Tuesday, Wednesday, Thursday & Friday: 9am–5pm Saturday & Sunday: Closed
Coldharbour Library Coldharbour Road, Northfleet, Gravesend, Kent DA11 8AE	Monday, Wednesday, Thursday & Friday: 9am–6pm Tuesday: 9am–8pm Saturday: 9am–5pm Sunday: Closed
Gravesend Library Windmill Street, Gravesend, Kent DA12 1BE	Monday, Tuesday, Wednesday, Thursday & Friday: 9am–6pm Saturday: 9am–5pm Sunday: Closed
Dashwood Library Dashwood Road, Northfleet, Gravesend, Kent DA11 7LY	Monday & Friday: 9:30am–1pm & 2pm–5pm Tuesday & Saturday: 2pm–5pm Wednesday, Thursday & Sunday: Closed
Higham Library Villa Road, Higham, Rochester, Kent ME3 7BS	Monday, Wednesday & Friday: 9am–1pm Tuesday & Thursday: 2pm–5:30pm Saturday: 10am–2pm Sunday: Closed
Hive House Library Hive House, 10-11 The Hive, Northfleet, Gravesend, Kent DA11 9DE	Monday & Tuesday: 9am–12:30pm Thursday & Friday: 2pm–5pm Saturday: 10am–2pm Wednesday & Sunday: Closed
King's Farm Library Sun Lane, Gravesend, Kent DA12 5HR	Monday, Tuesday, Wednesday & Friday: 9am–5pm Saturday: 10am–2pm Thursday & Sunday: Closed
Marling Cross Library 266 Mackenzie Way, Gravesend, Kent DA12 5TY	Tuesday: 9:30am–1pm & 2pm–5pm Thursday: 9:30am–1pm Friday: 2pm–5pm Saturday: 2pm–4pm Monday, Wednesday & Sunday: Closed
Meopham Library Wrotham Road, Meopham, Gravesend, Kent DA13 0AH	Monday, Tuesday, Thursday & Friday: 9am–6pm Saturday: 9am–1pm Wednesday & Sunday: Closed
Riverview Park Library The Alma, Leander Drive, Gravesend, Kent DA12 4NG	Monday, Tuesday, Wednesday & Friday: 9am–6pm Saturday: 10am–2pm Thursday & Sunday: Closed

Venue	Opening hours
Vigo Library Village Hall, The Bay, Vigo, Gravesend, Kent DA13 0TD	Tuesday: 11am–1pm & 2pm–5pm Saturday: 9:30am–2:30pm Monday, Wednesday, Thursday, Friday & Sunday: Closed
KENT (Maidstone)	
Kent County Council County Hall, Maidstone, Kent ME14 1XQ	Monday, Tuesday, Wednesday, Thursday & Friday: 9am–5pm Saturday & Sunday: Closed
Maidstone Library Kent History and Library Centre, James Whatman Way, Maidstone, Kent ME14 1LQ	Monday, Tuesday, Wednesday & Friday: 9am–6pm Thursday: 9am–8pm Saturday: 9am–5pm Sunday: Closed
SEVENOAKS	
Sevenoaks Library Buckhurst Lane, Sevenoaks, Kent TN13 1LQ	Monday, Tuesday, Wednesday & Friday: 9am–6pm Thursday: 9am–8pm Saturday: 9am–5pm Sunday: Closed
TONBRIDGE & MALLING	
Tonbridge Library 1 Avebury Avenue, Tonbridge, Kent TN9 1TG	Monday, Tuesday, Wednesday & Friday: 9am–6pm Thursday: 9am–8pm Saturday: 9am–5pm Sunday: Closed
THURROCK	
Grays Central Library Thameside Complex, Orsett Road, Grays, Essex RM17 5DX	Monday, Tuesday, Wednesday & Thursday: 10am–7pm Friday & Saturday: 10am–5pm Sunday: Closed
LONDON BOROUGH OF BEXLEY	
Central Library Townley Road, Bexleyheath DA6 7HJ	Monday, Tuesday & Wednesday: 10am–5:30pm Thursday: 10am–7pm Friday & Saturday: 10am–1pm Saturday: 1pm–5pm
LONDON BOROUGH OF BROMLEY	
Central Library High Street, Bromley BR1 1EX	Monday, Tuesday, Wednesday & Friday: 9:30am–6pm Thursday: 9:30am–8pm Saturday: 9:30am–5pm Sunday: Closed
MEDWAY	
Medway Council Gun Wharf, Dock Road, Chatham ME4 4TR	Monday, Tuesday, Wednesday, Thursday & Friday: 10am–4pm Saturday & Sunday: Closed

Project information may continue to be updated until Friday 8 May 2015 and you are therefore advised to check the website www.londonparamount.info and deposit locations for such updates.

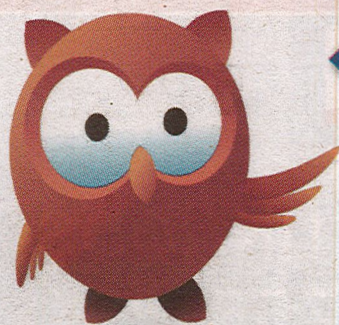
Copies of the documents, plans and maps will be available on LRCH's website at www.londonparamount.info from Monday 27 April 2015. They can also be provided on request by emailing consultation@londonparamount.info, by calling the Freephone number 0800 008 6765 Mondays to Fridays between 9am and 5:30pm or by writing to FREEPOST Ref: RTRB-LUJ-AGBY, London Paramount, c/o PPS Group, Sky Light City Tower, 50 Basinghall Street, London, EC2V 5DE. A reasonable copying charge will apply (up to a maximum of £300 for the full suite of documents). The documents can also be obtained on a DVD, free of charge, by contacting LRCH as detailed here.

LRCH is consulting on the proposed application. Any representations on the proposals should be made in writing to "FREEPOST Ref: RTRB-LUJ-AGBY, London Paramount, c/o PPS Group, Sky Light City Tower, 50 Basinghall Street, London, EC2V 5DE", sent by email to consultation@londonparamount.info, or by completing the feedback form which can be found on the LRCH's website at www.londonparamount.info. The deadline for receiving responses is Friday 5 June 2015. Please quote "London Paramount Entertainment Resort Order" in any correspondence.

LRCH requests that responses state the grounds of representation, indicate who is making it, and provide an address to which any correspondence relating to the representation may be sent.

We may be required to make copies of representations available to the Secretary of State. We will, however, request that personal details are not placed on the public record. Personal details will be held securely in accordance with the Data Protection Act 1998 and will be used solely in connection with the consultation process and the development of the Project and, except as noted above, will not be disclosed to any third parties.

Bircham Dyson Bell LLP
Solicitors and Parliamentary Agents acting for LRCH
50 Broadway, London SW7H 0BL
12 April 2015



Find whatever business you're looking for.

It's the business directory for you!
newsshopper.co.uk/click2find

Want to add your business? It's free! Enhanced listings are available too.

News Shopper

CLICK **find**

Supporting local businesses

Dartford & Swanley **News Shopper** newsshopper.co.uk

PROUDLY SERVING THE COMMUNITY FOR 50 YEARS 1965 - 2015 60p where sold

Wednesday, April 22, 2015



NEWS



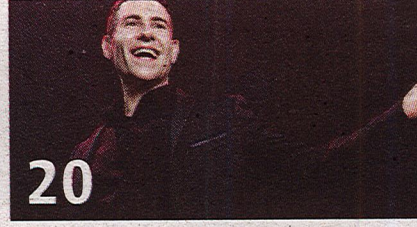
4
New nursery plans rejected

NEWS



5
App tells mums all they need to know

FEATURE



20
Lee Nelson has Prime ambition



TODAY'S PAPER STARTS ON THE NEXT PAGE

Advertisement

On May 7th we'll be...

Changing Dartford Together



Labour

News Shopper

PROUDLY

SERVING THE COMMUNITY

FOR 50 YEARS

1965 - 2015

60p where sold

Wednesday, April 22, 2015

● Mother charged with murder of her five-year-old son in car fire

FATAL INFERNO

DEPUTY NEWS EDITOR

PATRICK GRAFTON-GREEN

patrickgg@london.newsquest.co.uk

A mother from Dartford whose son died after he was pulled from a burning car has been charged with his murder.

Teresa Sheldon, 38, of Leyton Cross Road, appeared at Winchester Crown Court last week to face charges in connection with the death of her five-year-old son Tommy Sheldon.

Tommy died two weeks after suffering serious burns in the blaze in Merdon Castle Lane in the village of Hursley, Hampshire, on August 11 last year.

The remote lane was the scene of a major incident for the emergency services with police and fire crews called just after 8pm, including the Hampshire and Isle of Wight Air Ambulance.

It was two passersby who were first on the scene to help rescue Tommy.

They described coming across the fireball on their way to a fishing trip and seeing a boy inside the burning Ford Fiesta car.

As reported at the time, the pair braved the intensity of the flames and managed to open one of the doors of the car to reach Tommy who was inside.

The youngster was treated at the scene before being taken to Southampton General Hospital and on to a specialist burns unit in Bristol.

His mother was also taken to

hospital for treatment for injuries she sustained.

Despite the best efforts of medics, Tommy died from his injuries on August 25.

An appeal in his memory was subsequently set up by Hursley residents.

All monies collected from the appeal were donated to the Bristol Children's Hospital where the five-year-old was treated.

Following Tommy's death, detectives from Hampshire police's major crime team launched a murder inquiry to establish what caused the fire and subsequent death of the child.

An inquest was opened in September by Central Hampshire Coroner Grahame Short, which was adjourned while the murder investigation - code-named Operation Ursa - was under way.

That probe has resulted in Sheldon being charged with the youngster's murder along with unlawfully killing him.

She first appeared before Basingstoke magistrates before the case was adjourned to Winchester Crown Court.

Sheldon also faces a charge of the attempted murder of another youngster, who cannot be identified for legal reasons.

The 38-year-old was remanded in custody during the hearing at Winchester Crown Court before Judge Keith Cutler, Recorder of Winchester.

She is due back before the courts in June.



Tommy Sheldon, above, died from serious burns after being pulled from a burning car in Hursley, Hampshire, in August last year



'I'D BE A WELL GOOD PRIME MINISTER'

LEE NELSON THROWS HIS CAP INTO THE RING SEE PAGE 20



P.J.ELECTRICS

NEED EXTRA SOCKETS? POWER / LIGHTING IN LOFT OR GARDEN? BURGLAR ALARM? FUSE BOARD? COMPLETE RE-WIRE? COME AND TALK TO THE EXPERTS AND SAVE ££££'S FREE TECHNICAL ADVICE P.J. ELECTRICS 47-49 UPPER WICKHAM LANE WELLING DA16 3AD 0208 304 2646 ALSO AT: COBBS 349 BEXLEY ROAD NORTHUMBERLAND HEATH DA8 3EZ 01322 334592

Polish TANDOORI INDIAN TAKEAWAY British Curry Award Winner Best Indian takeaway 2013 www.thepolish.co.uk 10% DISCOUNT ON ALL COLLECTION ORDERS OVER £13 ORDER ONLINE FREE HOME DELIVERY WITHIN A 4 MILE RADIUS ON ORDERS OVER £13 01322 284 303 01322 284 275 449 PRINCES ROAD, DARTFORD, KENT DA1 1RB

TIFFIN INDIAN TAKEAWAY 01322 270 277 TIFFIN-DARTFORD.CO.UK FREE DELIVERY, COLLECTIONS & PRE-ORDERS AVAILABLE 8 MARKET ST, DARTFORD, DA1 1ET

SUCHA FITNESS CENTRE JOIN TODAY £30.00 A MONTH ON SITE SPORTS & FITNESS SUPPLEMENT STORE 01474 332533 www.sucha.co.uk

Gemini Coach Tours Day trips by Coach See and discover more with Gemini Coach Tours 01322 383 913 info@geminitours.co.uk

the jafflong traditional & authentic indian cuisine TRIP ADVISOR WINNER 2014 Banquet Nights 58 Spital Street, Dartford, DA1 2DT

The crash investors should worry about

Leo Lewis Inside China

Nobody could possibly relish a car crash, but you can learn from it. This particular prang, and its hideously mangled, lime-green Lamborghini, is saying that now may be the time for the shrewder Shanghai investor to cash out.

The magnificently squashed Aventador, which abruptly ended its 100mph journey in a central Beijing tunnel over the weekend, was accompanied by a Ferrari 458 Italia that also finished the adventure badly mauled. The drivers, one aged 21 and the other 20, had been racing

their new Italian supercars when a spot of rain cruelly challenged their skills. The two men were injured in the crash, but not fatally.

This is Beijing, where there is a rich history of this sort of incident, so public speculation instantly focused on the background of the two racers, surnamed Tang (in the £400,000 to £500,000 Lambo) and Yu (in the £300,000 to £400,000 Ferrari). It seemed inevitable that they were the spoilt, recklessly privileged sons of either corrupt Communist Party officials or tycoons who doubtless made their fortunes doing something shady. Police statements that the two car owners were "unemployed" appeared to confirm suspicions.

Yet those instincts also seem to have been wrong, at least in the case



The Lamborghini Aventador was written off while it was racing through Beijing

of the Lamborghini driver. Mr Tang's mother furiously denied accusations of privilege and said that her son was an "ordinary kid" who had simply made huge profits playing the stock market.

That, if true, is both plausible and fascinating: a glance at the Shanghai composite index over the past year does, indeed, show how readily £50,000 judiciously invested in 2013 could have earned enough to buy a £400,000 Lamborghini by now. It also raises questions of how far the

market has disconnected with China's economic fundamentals.

And the fun does not seem to be stopping. On Monday, surprisingly awful trade figures showed both Chinese exports and imports contracting by double-digit margins in March — a misery not experienced since the aftermath of the global financial crisis in 2009. Rather than moaning, Shanghai took this data as a prompt to send shares up to a seven-year high.

That said, the history of Mr Tang's

Lamborghini is not without its problems. It is possible that his initial investment capital was a gift from his dad, but it is also very likely that Mr Tang, in common with thousands of other young investors, was leveraged to the hilt.

Across China, brokerages are rushing to lend money for would-be margin traders, without spending too much time explaining the risks. By last Friday, brokerages' outstanding loans to investors for stock-buying had hit a record £170 billion, a 50 per cent rise since the start of the year. This is the money that has caused Shanghai shares to remain so very bubbly as China's economic data has worsened, and has given Mr Tang the rally that bought his lime green Lamborghini.

The big question is whether Beijing sees Mr Tang's car as a signal to clamp down on the margin trading and blow some froth off the market. Such a move could work — but, then again, it could send everything skidding into the wall.

Legal Notices

LONDON RESORT COMPANY HOLDINGS LTD SECTION 48, PLANNING ACT 2008 REGULATION 4, INFRASTRUCTURE PLANNING (APPLICATIONS: PRESCRIBED FORMS AND PROCEDURE) REGULATIONS 2009

LONDON PARAMOUNT ENTERTAINMENT RESORT DEVELOPMENT CONSENT ORDER NOTICE PUBLICISING A PROPOSED APPLICATION FOR A DEVELOPMENT CONSENT ORDER ("DCO")

Notice is hereby given that London Resort Company Holdings Ltd ("LRCH") of 17 Albemarle Street, London W1S 4HP intends to apply to the Secretary of State for Communities and Local Government under section 37 of the Planning Act 2008 for the above mentioned DCO ("the proposed application").

The proposed application for the London Paramount Entertainment Resort project ("the Resort") which will be located on the Swanscombe Peninsula in the County of Kent, in the District of Dartford and the District of Gravesham, will be a nationally significant visitor attraction and leisure resort comprising a leisure core up to 50 ha in area, themed around the films and television programmes of Paramount Pictures, and currently including (but not limited to) the British Broadcasting Corporation (BBC) and Aardman Animations.

- The Resort core will include—
- events spaces, rides, attractions, day-time and night-time shows and parades, entertainment venues, cinemas, theatres and nightclubs;
 - ancillary food and beverage, retail, back of house/service and guest service facilities;
 - hotel rooms as a part of a total provision of up to 5,000 hotel bedrooms across the Resort development as a whole;
 - associated car parking as part of a maximum provision of 14,000 spaces; and
 - hard and soft landscaping including amenity water features such as ponds and canals.
- The proposed Resort development also includes the following principal elements—
- the creation of a visitor entrance square;
 - the creation of a range of hotels, a water park and a transport interchange at the visitor entrance square;
 - the construction of a new dual carriageway access road approximately 2.8 kilometres in length, between the A2(T)/B259 junction, and the Resort development area;
 - the provision of a transport interchange at Ebbsfleet International Station, pedestrian facilities from London Road to the River Thames; pedestrian facilities and cycle track route along the Thames Path route; enhancements to the existing jetty on the River Thames to facilitate access by boat for the delivery of construction materials, and the creation of a floating pontoon for embarkment and disembarkment of visitors;
 - the creation of a conference and exhibition event space;
 - the creation of a creative business hub and office space for the creative industries;
 - the creation of a green zone to include areas of environmental enhancement and wildlife habitat creation beside the River Thames;
 - the provision of waste management, power generation and power distribution facilities;
 - the enhancement of flood defence works; and
 - the provision of ancillary emergency and security features.

The proposed Resort is "EIA development" for the purposes of the Infrastructure Planning (Environmental Impact Assessment) Regulations 2009. This means that the proposed works constitute development for which an Environmental Impact Assessment would be required. LRCH's proposed application for a DCO will, therefore, be accompanied by an Environmental Statement, containing the information about the environmental effects of the proposed development.

The documents, plans and maps showing the nature and location of the proposed application, including information so far compiled about environmental impacts (preliminary environmental information), may be inspected free of charge from Monday 27 April 2015 to Friday 5 June 2015 at the locations and times set out below:

Venue	Opening hours
DARTFORD	
Dartford Council Offices Civic Centre, Home Gardens, Dartford, Kent DA1 1DR	Monday, Tuesday, Wednesday & Thursday: 8:45am–5:15pm Friday: 8:45am–4:45pm Saturday & Sunday: Closed
Swanscombe and Greenhithe Town Council Council Offices, The Grove, Kent DA10 0GA	Monday, Tuesday, Thursday & Friday: 9:30am–1pm & 1:45pm–4pm Wednesday, Saturday & Sunday: Closed
Community Café Old Fire Station Café, Church Road, Swanscombe, Kent DA10 0HF	Monday, Tuesday, Wednesday, Thursday & Friday: 10am–2pm Saturday & Sunday: Closed
Greenhithe Library London Road, Greenhithe, Kent DA9 9EJ	Tuesday & Thursday: 1pm–5:30pm Saturday 9:30am–12:30pm Monday, Wednesday, Friday & Sunday: Closed
Swan Valley Library Swanscombe Library Discovery Centre, Ebbsfleet Academy, Southfleet Road, Swanscombe, Kent, DA10 0BZ	Monday, Tuesday & Saturday: 10am–2pm Wednesday & Friday: 1pm–5pm Thursday & Sunday: Closed

Venue	Opening hours
Longfield Library 49 Main Road, Longfield, Kent DA3 7QT	Tuesday & Friday: 1pm–6pm Wednesday & Thursday: 9am–1pm Saturday 10am–2pm Monday & Sunday: Closed
Dartford Library Central Park, Market Street, Dartford, Kent DA1 1EU	Monday, Tuesday, Wednesday, Thursday & Friday: 8:30am–6pm Saturday: 9am–5pm Sunday: Closed
Temple Hill Library Temple Hill Square, Dartford, Kent DA1 5HY	Monday, Tuesday, Thursday & Friday: 9am–6pm Saturday: 10am–2pm Wednesday & Sunday: Closed
Ashen Drive Library Ashen Drive, Dartford, Kent DA1 3LY	Monday & Thursday: 2pm–6pm Tuesday & Friday: 9am–1pm Saturday: 10am–12pm Wednesday & Sunday: Closed
Fleetdown Library Swaledale Road, Dartford, Kent DA2 6JZ	Tuesday, Thursday & Friday: 9:30am–5:30pm Wednesday: 1:30pm–5:30pm Saturday: 10am–12pm Monday & Sunday: Closed
Sutton-at-Hone Library Main Road, Sutton-At-Hone, Dartford, Kent DA4 9HQ	Monday & Friday: 10am–6pm Tuesday & Saturday: 10am–2pm Wednesday, Thursday & Sunday: Closed
Summerhouse Drive Library 80 Summerhouse, Bexley, Kent DA6 2EE	Tuesday & Thursday: 9am–6pm Friday: 2pm–6pm Saturday: 10am–2pm Monday, Wednesday & Sunday: Closed
GRAVESHAM	
Gravesham Borough Council Civic Centre and Gateway, Windmill Street, Gravesend, Kent DA12 1AU	Monday, Tuesday, Wednesday, Thursday & Friday: 9am–5pm Saturday & Sunday: Closed
Coldharbour Library Coldharbour Road, Northfleet, Gravesend, Kent DA11 8AE	Monday, Wednesday, Thursday & Friday: 9am–6pm Tuesday: 9am–8pm Saturday: 9am–5pm Sunday: Closed
Gravesend Library Windmill Street, Gravesend, Kent DA12 1BE	Monday, Tuesday, Wednesday, Thursday & Friday: 9am–6pm Saturday: 9am–5pm Sunday: Closed
Dashwood Library Dashwood Road, Northfleet, Gravesend, Kent DA11 7LY	Monday & Friday: 9:30am–1pm & 2pm–5pm Tuesday & Saturday: 2pm–5pm Wednesday, Thursday & Sunday: Closed
Higham Library Villa Road, Higham, Rochester, Kent ME3 7BS	Monday, Wednesday & Friday: 9am–1pm Tuesday & Thursday: 2pm–5:30pm Saturday: 10am–2pm Sunday: Closed
Hive House Library Hive House, 10-11 The Hive, Northfleet, Gravesend, Kent DA11 9DE	Monday & Tuesday: 9am–12:30pm Thursday & Friday: 2pm–5pm Saturday: 10am–2pm Wednesday & Sunday: Closed
King's Farm Library Sun Lane, Gravesend, Kent DA12 5HR	Monday, Tuesday, Wednesday & Friday: 9am–5pm Saturday: 10am–2pm Thursday & Sunday: Closed
Marling Cross Library 266 Mackenzie Way, Gravesend, Kent DA12 5TY	Tuesday: 9:30am–1pm & 2pm–5pm Thursday: 9:30am–1pm Friday: 2pm–5pm Saturday: 2pm–4pm Monday, Wednesday & Sunday: Closed
Meopham Library Wrotham Road, Meopham, Gravesend, Kent DA13 0AH	Monday, Tuesday, Thursday & Friday: 9am–6pm Saturday: 9am–1pm Wednesday & Sunday: Closed
Riverview Park Library The Alma, Leander Drive, Gravesend, Kent DA12 4NG	Monday, Tuesday, Wednesday & Friday: 9am–6pm Saturday: 10am–2pm Thursday & Sunday: Closed

Venue	Opening hours
Vigo Library Village Hall, The Bay, Vigo, Gravesend, Kent DA13 0TD	Tuesday: 11am–1pm & 2pm–5pm Saturday: 9:30am–2:30pm Monday, Wednesday, Thursday, Friday & Sunday: Closed
KENT (Maidstone)	
Kent County Council County Hall, Maidstone, Kent ME14 1XQ	Monday, Tuesday, Wednesday, Thursday & Friday: 9am–5pm Saturday & Sunday: Closed
Maidstone Library Kent History and Library Centre, James Whatman Way, Maidstone, Kent ME14 1LQ	Monday, Tuesday, Wednesday & Friday: 9am–6pm Thursday: 9am–8pm Saturday: 9am–5pm Sunday: Closed
SEVENOAKS	
Sevenoaks Library Buckhurst Lane, Sevenoaks, Kent TN13 1LQ	Monday, Tuesday, Wednesday & Friday: 9am–6pm Thursday: 9am–8pm Saturday: 9am–5pm Sunday: Closed
TONBRIDGE & MALLING	
Tonbridge Library 1 Auebury Avenue, Tonbridge, Kent TN9 1TG	Monday, Tuesday, Wednesday & Friday: 9am–6pm Thursday: 9am–8pm Saturday: 9am–5pm Sunday: Closed
THURROCK	
Grays Central Library Thameside Complex, Orsett Road, Grays, Essex RM17 5DX	Monday, Tuesday, Wednesday & Thursday: 10am–7pm Friday & Saturday: 10am–5pm Sunday: Closed
LONDON BOROUGH OF BEXLEY	
Central Library Townley Road, Bexleyheath DA6 7HJ	Monday, Tuesday & Wednesday: 10am–5:30pm Thursday: 10am–7pm Friday & Saturday: 10am–1pm Saturday: 1pm–5pm
LONDON BOROUGH OF BROMLEY	
Central Library High Street, Bromley BR1 1EX	Monday, Tuesday, Wednesday & Friday: 9:30am–6pm Thursday: 9:30am–8pm Saturday: 9:30am–5pm Sunday: Closed
MEDWAY	
Medway Council Gun Wharf, Dock Road, Chatham ME4 4TR	Monday, Tuesday, Wednesday, Thursday & Friday: 10am–4pm Saturday & Sunday: Closed

Project information may continue to be updated until Friday 8 May 2015 and you are therefore advised to check the website www.londonparamount.info and deposit locations for such updates.

Copies of the documents, plans and maps will be available on LRCH's website at www.londonparamount.info from Monday 27 April 2015. They can also be provided on request by emailing consultation@londonparamount.info, by calling the Freephone number 0800 008 6765 Mondays to Fridays between 9am and 5:30pm or by writing to FREEPOST Ref: RTRB-LUJ-AGBY, London Paramount, c/o PPS Group, Sky Light City Tower, 50 Basinghall Street, London, EC2V 5DE. A reasonable copying charge will apply (up to a maximum of £300 for the full suite of documents). The documents can also be obtained on a DVD, free of charge, by contacting LRCH as detailed here.

LRCH is consulting on the proposed application. Any representations on the proposals should be made in writing to "FREEPOST Ref: RTRB-LUJ-AGBY, London Paramount, c/o PPS Group, Sky Light City Tower, 50 Basinghall Street, London, EC2V 5DE", sent by email to consultation@londonparamount.info, or by completing the feedback form which can be found on the LRCH's website at www.londonparamount.info. The deadline for receiving responses is Friday 5 June 2015. Please quote "London Paramount Entertainment Resort Order" in any correspondence.

LRCH requests that responses state the grounds of representation, indicate who is making it, and provide an address to which any correspondence relating to the representation may be sent.

We may be required to make copies of representations available to the Secretary of State. We will, however, request that personal details are not placed on the public record. Personal details will be held securely in accordance with the Data Protection Act 1998 and will be used solely in connection with the consultation process and the development of the Project and, except as noted above, will not be disclosed to any third parties.

Bircham Dyson Bell LLP
Solicitors and Parliamentary Agents acting for LRCH
50 Broadway, London SW1H 0BL
12 April 2015

THE TIMES



Max 24C
Min -2C

Wednesday April 15 2015 | thetimes.co.uk | No 71483 26

Only 80p to print members £1.20

2 Fashion The best bags for summer (that we can all afford)



Tanya Byron
Lack of sex: how to revive your relationship

TIMES PHOTOGRAPHER RICHARD POHLE



David Cameron promised voters that Britain was "on the brink of something special" as he launched the Conservative party's manifesto in Swindon yesterday

Brussels vows to block Cameron on EU treaty

President's threat raises stakes over referendum

Bruno Waterfield
Brussels Correspondent
Francis Elliott Political Editor

The president of the European Commission has ruled out any treaty negotiations on Britain's relationship with Europe until two years after the referendum promised by David Cameron yesterday.

In comments that will infuriate the prime minister, sources close to Jean-Claude Juncker told *The Times* that there was no prospect of formal plans for treaty change until the end of 2019 at the earliest, with negotiations begin-

ning the following year. "No treaty change proposals are envisaged until after November 2019, the end of Mr Juncker's mandate as president of the commission," an official said.

Mr Cameron tried to block Mr Juncker from taking the top Brussels post last summer. The setback means he faces holding a vote on EU membership without the treaty changes that he has promised would "reclaim powers from Brussels" — a position that risks pushing Britain closer to the exit.

If he returns to Downing Street next month, Mr Cameron is bound by a promise in the Conservative manifesto

to hold "an in/out referendum on Britain's membership of the EU before the end of 2017".

In the absence of treaty change in the near future, Whitehall officials have raised the idea of a "protocol" promising Britain amendments at a future date — as late as 2025 — when EU treaties are overhauled. Such a guarantee, which would still require the unanimous support of EU countries, would be unlikely to satisfy Eurosceptics, including Ukip supporters.

The prime minister told voters yesterday that Britain was "on the brink of something special" as he launched the

manifesto. Thirty hours of free childcare was added to giveaways for "every stage of life" in the Tory electoral offer.

Speaking directly to Ukip voters, he said that they had no choice but to vote Conservative if they wanted to avoid the "horror" of a Labour government propped up by the SNP. Evidence that Brussels is digging in over treaty change will be seized on by Nigel Farage, however, and could undermine the Tory objective of persuading former supporters to return to the fold.

The Conservative manifesto demands two changes to Europe's Lisbon **Continued on page 2, col 3**

Police raid mosque in hunt for imam's killer

Faisal Hanif
Fiona Hamilton Crime Correspondent

Counterterrorism officers were searching a mosque last night in relation to the murder of its Syrian former imam in the most controversial raid of its kind for more than a decade.

The operation came after a teetotal, churchgoing Jamaican businessman was charged with the shooting of Abdul Hadi Arwani, 48, a vocal critic of the Assad regime who was found slumped in his car last week. Detectives were last night questioning an unnamed second man, 61, on suspicion of conspiracy to commit murder.

Scotland Yard acknowledged the sensitivity of its search of the An Noor Cultural and Community Centre, a mosque in west London, and moved to reassure the local Muslim community.

The last significant raid of its type by counterterrorism officers took place in January 2003 when police searched the Finsbury Park mosque at the height of investigations into the ricin plot and the murder in Manchester of detective constable Stephen Oake.

The Met, which was searching a series of addresses last night, said: "All officers involved in the search are sensitive to the impact that their presence will have and are aware that this action may cause concern in the local community."

"We have been in contact with trusted community Muslim advisers this afternoon to reassure them that the action is necessary and that the premises will reopen as quickly as possible."

Mr Arwani, a father of six, was found dead last Tuesday in the Greenhill area of Wembley, northwest London. The investigation was quickly taken over by counterterrorism detectives because of his political background and family history. He left Syria in the 1980s during the uprising against the Baathist regime of Hafez al-Assad and moved to Britain a decade later.

The Times understands that the victim's family do not know Leslie Cooper, 36, from Harlesden in northwest London, who was charged with Mr Arwani's murder. He appeared yesterday afternoon at Camberwell Green magistrates' court.

The hearing lasted one minute, with **Continued on page 4, col 1**

IN THE NEWS

400 migrants drown
Migrants who were rescued while sailing across the Mediterranean in dozens of rickety boats have said that up to 400 of their companions died on the journey. **Page 28**

Volcano disaster risk
Mankind is unprepared for a catastrophic volcanic eruption that could kill hundreds of millions and cast the world back into a "pre-civilisation state", academics warn. **Page 19**

£50m salvage bounty
The deepest salvage operation in history has recovered silver rupees worth £50 million from the wreck of the *City of Cairo*, a steamer torpedoed off Africa by a U-boat in 1942. **Page 11**

Phones4u debt blow
Four American distressed debt funds that snapped up bonds in Phones4u after its collapse last year could recover at least 20 times more than the British taxpayer. **Page 35**

Sterling spared fine
Liverpool have decided not to fine Raheem Sterling despite video footage that appears to show the forward passing out after inhaling nitrous oxide, known as laughing gas. **Page 68**

